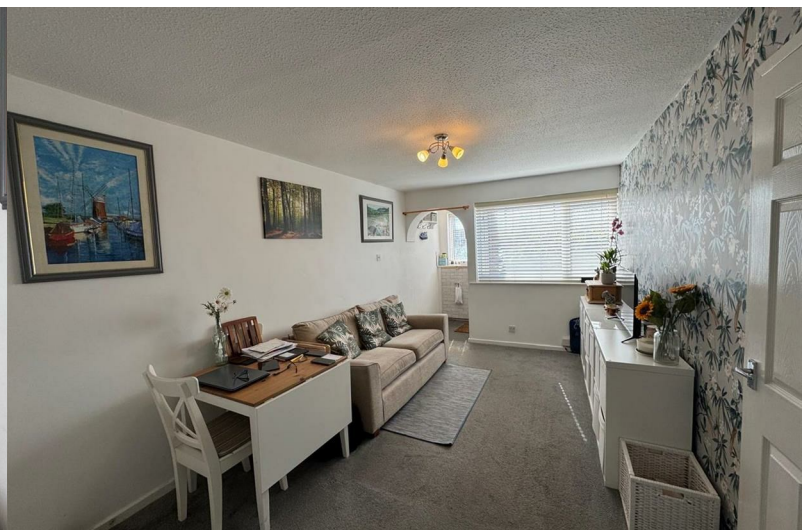
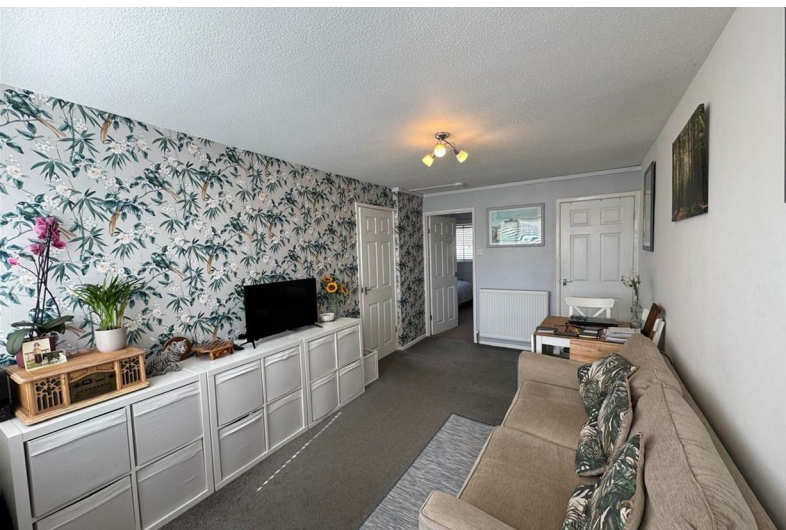




1 Melton Way

Roberttown, Liversedge, WF15 7QU

£110,000



1 Melton Way

Roberttown, Liversedge, WF15 7QU

£110,000



ONE BEDROOM GROUND FLOOR FLAT *** ENCLOSED CORNER GARDENEXCELLENT LOCATION***

Are you looking for a bungalow but are being priced out of the market? Then look no further than this lovely one bedroom ground floor flat that must be viewed to appreciate the property on offer. Accommodation which comprises of; entrance lobby, lounge diner, kitchen bathroom and double bedroom. Positioned on a corner plot with enclosed and mostly private gardens. NOT TO BE MISSED! ***Contact YORKSHIRE RESIDENTIAL 01924 501333 to arrange a viewing***

Entrance Lobby

Lounge Diner

15'0" x 9'3" (4.57m x 2.82m)

Radiator and storage cupboard

Kitchen

12'4" x 5'2" (3.76m x 1.57m)

Fitted kitchen units with stainless steel sink unit, hob, oven and extractor hood over. Radiator.

Bathroom

5'6" x 5'4" (1.68m x 1.63m)

Three piece white suite comprising low level wc, wash hand basin set into vanity unit and paneled bath with shower over and screen. Complimentary tiled walls and heated towel rail.

Double Bedroom

7'6" extending to 11'0" x 11'3" (2.29m extending to 3.35m x 3.43m)

Radiator.

Exterior

Enclosed corner plot.



Road Map



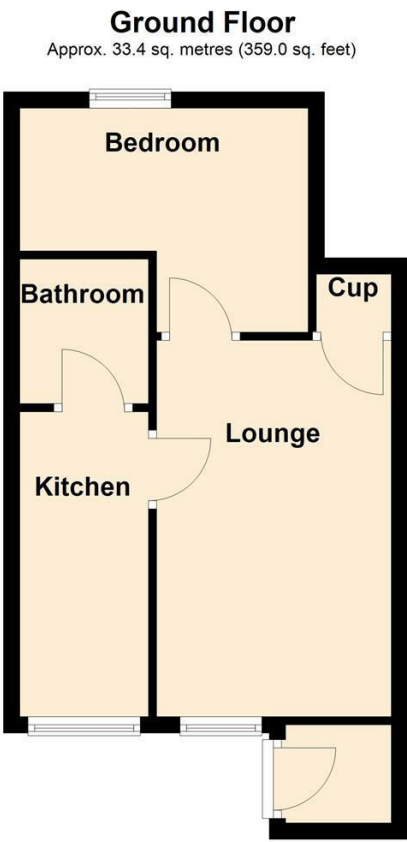
Hybrid Map



Terrain Map



Floor Plan

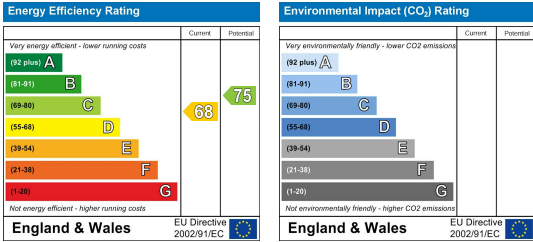


Total area: approx. 33.4 sq. metres (359.0 sq. feet)

Viewing

Please contact our Cleckheaton Office on 01924 501333 if you wish to arrange a viewing appointment for this property or require further information.

Energy Efficiency Graph



These particulars, whilst believed to be accurate are set out as a general outline only for guidance and do not constitute any part of an offer or contract. Intending purchasers should not rely on them as statements of representation of fact, but must satisfy themselves by inspection or otherwise as to their accuracy. No person in this firm's employment has the authority to make or give any representation or warranty in respect of the property.